

# Solar Projects: Darlington County

### Legend

- County Boundary
- City Limits

### Operating

- 1- 1634 Solar
- 2- Ashley Solar
- 3- Birch Solar
- 4- Central Electric Power Coop
- 5- Chapman Solar
- 6- Dogwood Creek Solar
- 7- Jefferson Solar
- 8- Luz Solar
- 9- Marshall Solar
- 10- Redwing Solar
- 11- Sonoco Products Company
- 12- Stamey Solar
- 13- Tedder Solar
- 14- Watuga Solar

### Approved Planning/Filot - No Building Permits

- 15- Bell Solar
- 16- Fairfield Solar
- 17- Lotus Solar
- 18- Scarlet Solar
- 22- Culpepper Solar
- 27- IP Solar
- 28- Pit Stop Solar (appealed)
- 29- Rollins Solar
- 30- Ross Solar (appealed)

### Projects in Planning - No Filot

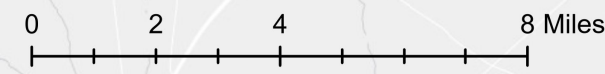
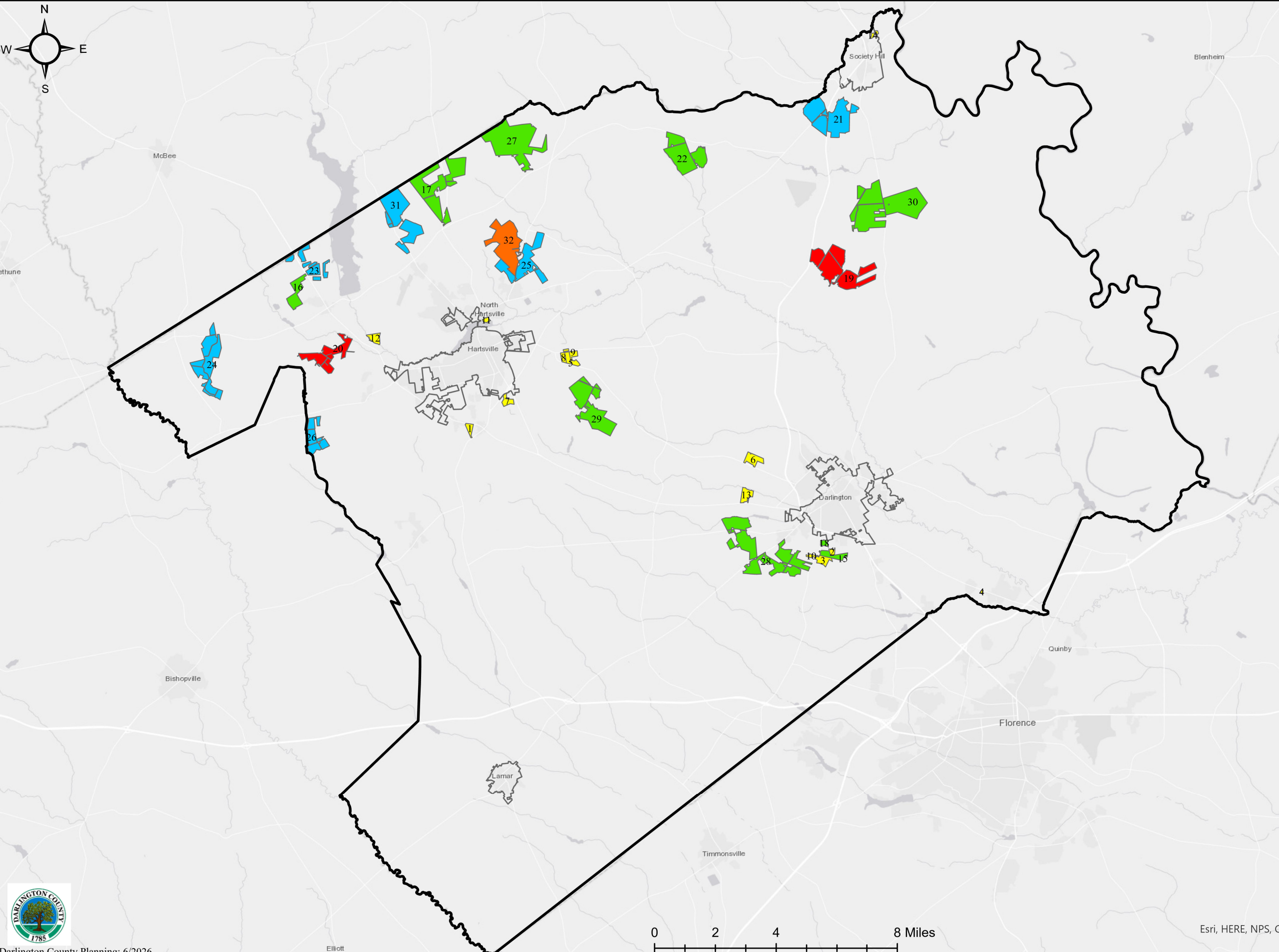
- 19- Gandy Solar
- 20- Stripe Solar

### Projects with Filot - Planning Pending

- 21- Cedar Creek Solar
- 23- Duke Energy
- 24- Fremont Solar
- 25- GEB Solar
- 26- Hawfinch Solar
- 31- Throwback Solar

### Building in Process - Planning & Filot Complete

- 32- B&K Solar



# Solar Projects: Darlington

**Legend**

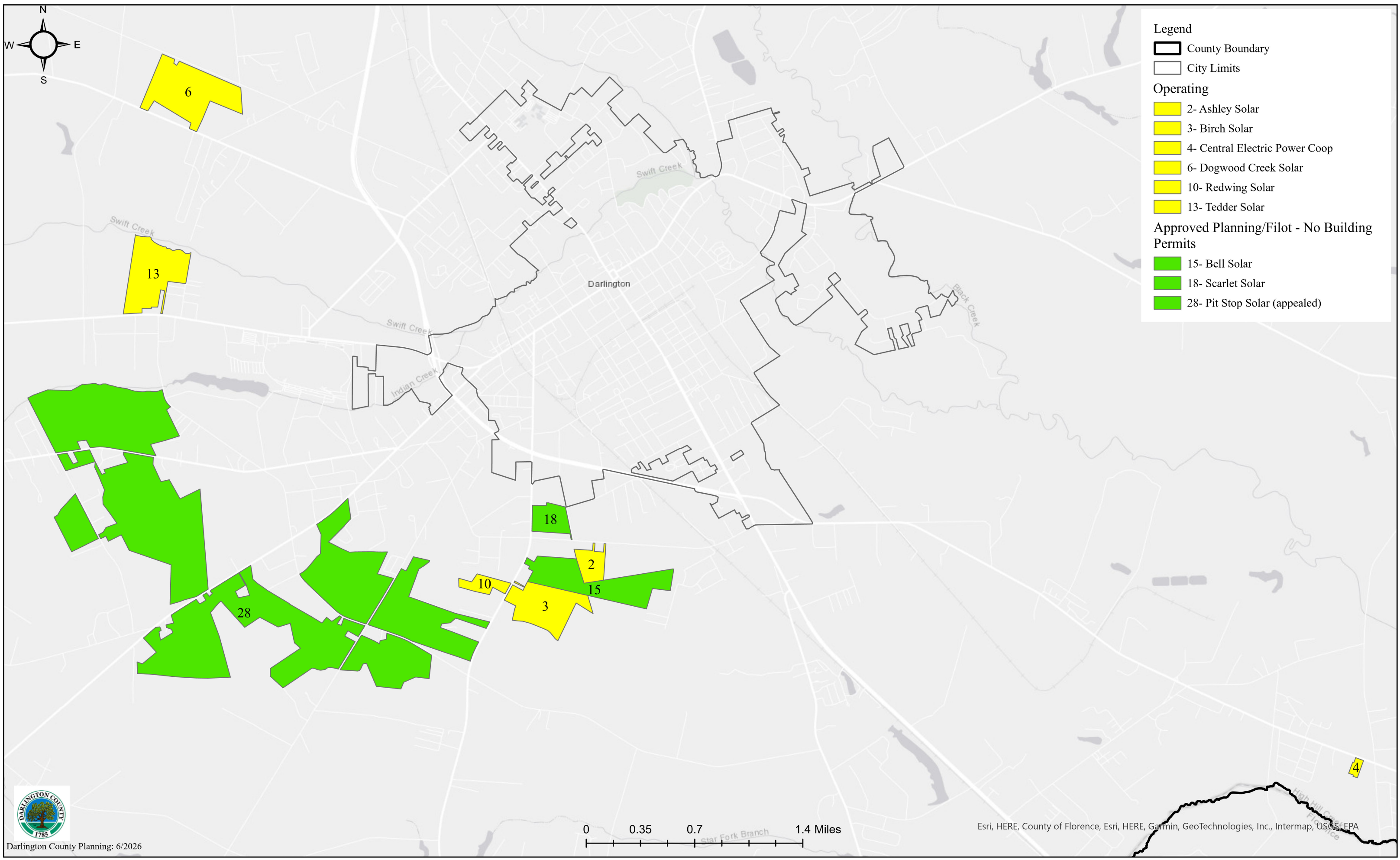
- County Boundary
- City Limits

**Operating**

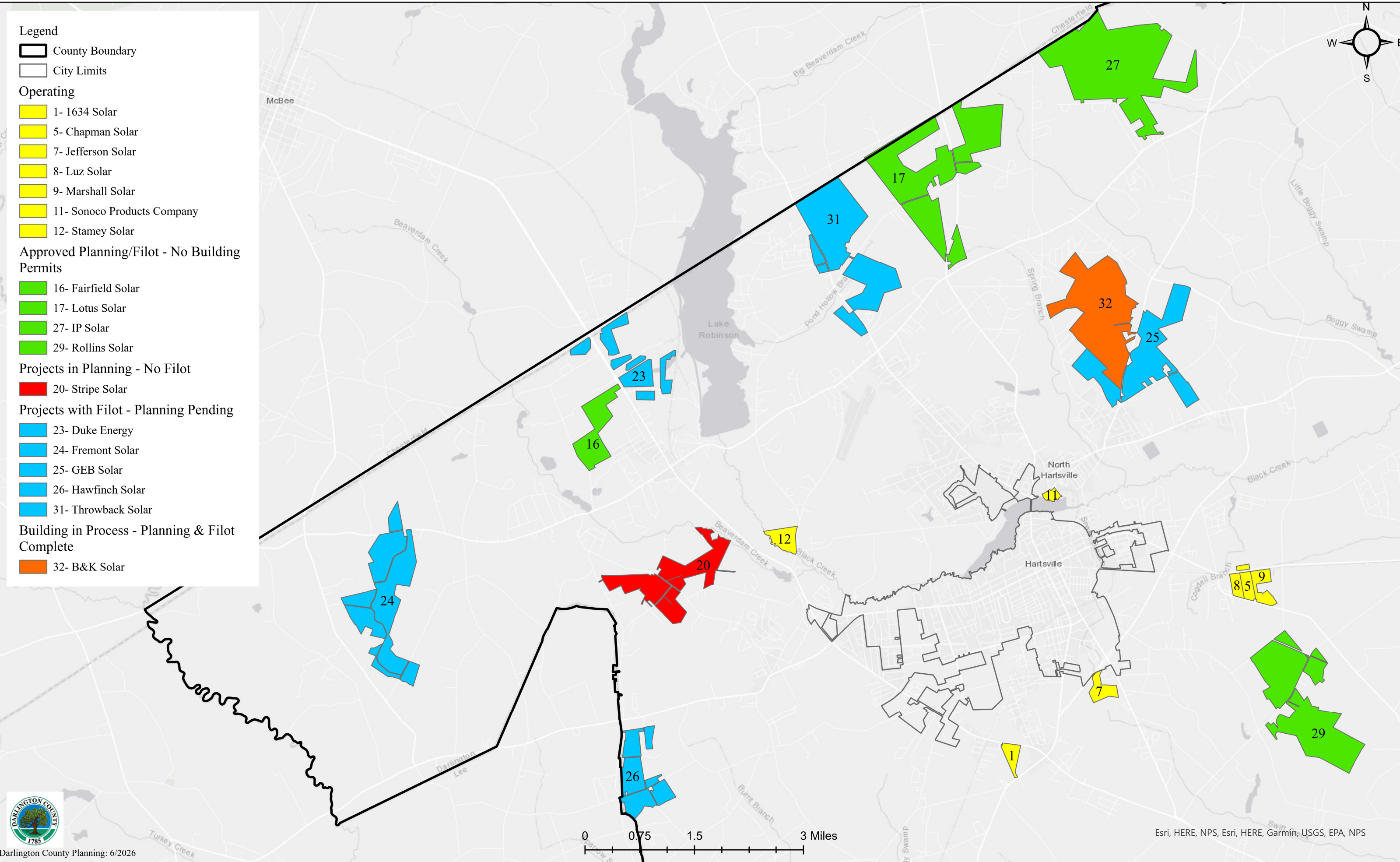
- 2- Ashley Solar
- 3- Birch Solar
- 4- Central Electric Power Coop
- 6- Dogwood Creek Solar
- 10- Redwing Solar
- 13- Tedder Solar

**Approved Planning/Filot - No Building Permits**

- 15- Bell Solar
- 18- Scarlet Solar
- 28- Pit Stop Solar (appealed)



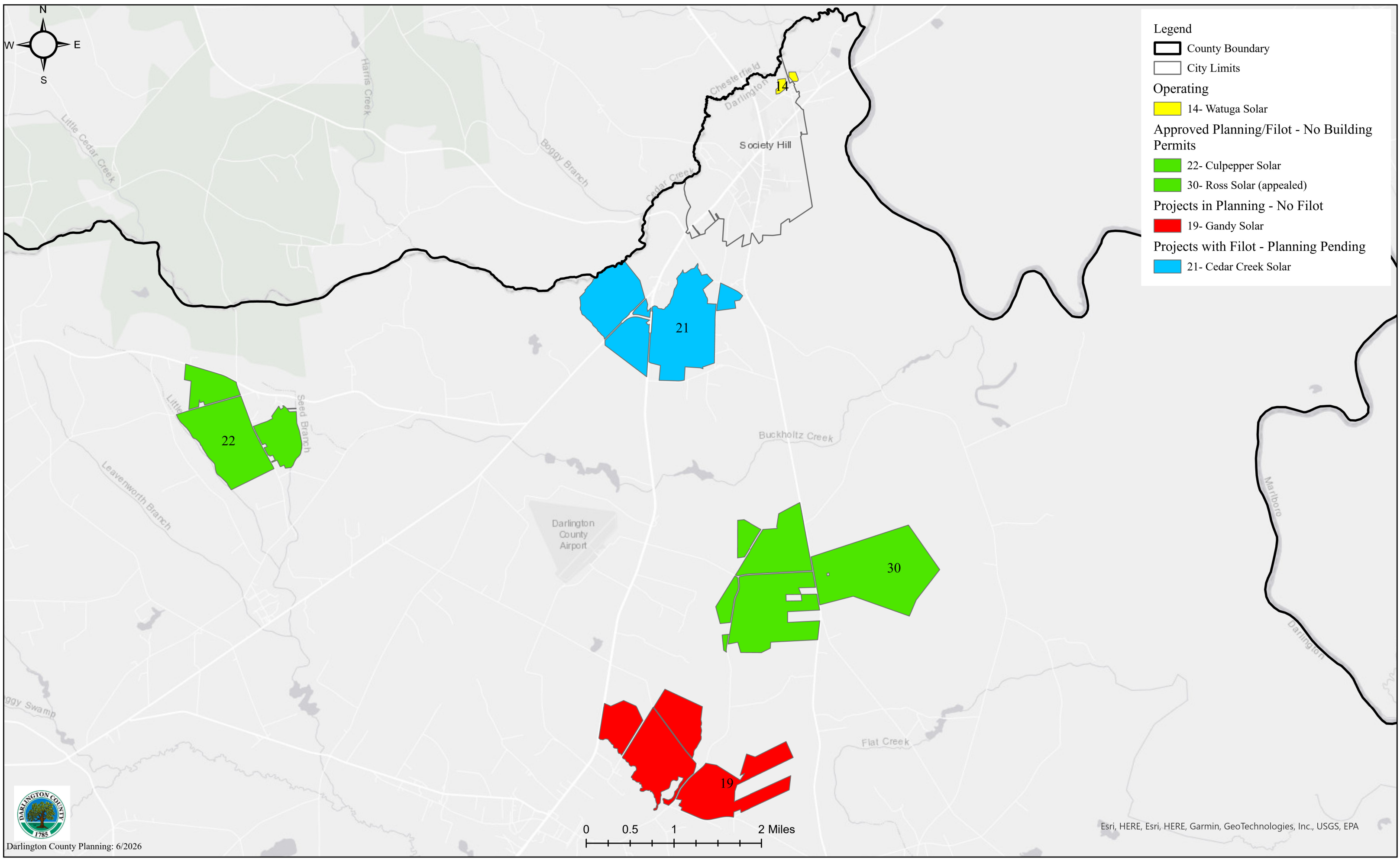
# Solar Projects: Hartsville



# Solar Projects: Society Hill

**Legend**

- County Boundary
- City Limits
- Operating**
  - 14- Watuga Solar
- Approved Planning/Filot - No Building Permits**
  - 22- Culpepper Solar
  - 30- Ross Solar (appealed)
- Projects in Planning - No Filot**
  - 19- Gandy Solar
- Projects with Filot - Planning Pending**
  - 21- Cedar Creek Solar



Solar Site	Total Acreage of Tax Parcels Involved	Actual or GIS estimated acreage with solar panels
<b>Operating Solar Sites</b>		
1634 SOLAR	44.57	12.65
ASHLEY SOLAR	22.30	9
BIRCH SOLAR	71.03	10
CENTRAL ELECTRIC POWER COOP	4.40	1.4
CHAPMAN SOLAR	37.86	13.5
DOGWOOD CREEK SOLAR	85.36	47.5
JEFFERSON SOLAR	55.35	43
LUZ SOLAR	30.43	4.5
MARSHALL SOLAR	59.96	12.4
REDWING SOLAR	18.00	12.48
SONOCO PRODUCTS COMPANY	30.50	12
STAMEY SOLAR	60.00	9
TEDDER SOLAR	88.67	12.2
WATAUGA SOLAR	13.71	10.7
<b>Operating Solar Sites Total</b>	<b>622.14</b>	<b>210.33</b>
<b>Approved Planning/FILOT - No Building Permits</b>		
BELL SOLAR	97.12	44.5
FAIRFIELD SOLAR	202.57	70
LOTUS SOLAR	870.74	450
SCARLET SOLAR	26.08	13.5
CULPEPPER SOLAR	677.46	284.58
IP SOLAR	1,069.49	394.51
PIT STOP SOLAR (Appealed)	1,158.82	293.74
ROLLINS SOLAR	782.68	253.55
ROSS SOLAR (Appealed)	1,430.36	305.95
<b>Approved Planning/FILOT - No Building Permits Total</b>	<b>6,315.32</b>	<b>2110.33</b>
<b>Projects in Planning - No FILOT</b>		
GANDY SOLAR	872.12	No Data
STRIPE SOLAR	417.89	No Data
<b>Projects in Planning - No FILOT Total</b>	<b>1,290.01</b>	<b>No Data</b>

**Projects with FILOT - Planning Pending**

CEDAR CREEK SOLAR	885.28	No Data
DUKE ENERGY	1,089.12	250.89
FREMONT SOLAR	665.63	No Data
GEB SOLAR	554.21	No Data
HAWFINCH SOLAR	276.35	No Data
THROWBACK SOLAR	743.38	No Data

<b>Projects with FILOT - Planning Pending Total</b>	4,213.97	
---	----------	--

<b>Projects with FILOT - Planning Pending Total (with available panel layout data)</b>	1,089.12	250.89
--	----------	--------

**Building in Process - FILOT & Planning Complete**

B&K SOLAR	734.07	354.22
-----------	--------	--------

<b>Building in Process - FILOT Planning and Building Codes Complete Total</b>	734.07	354.22
---	--------	--------

---

Total tax parcel acreage of all known projects	13,175.51	N/A
--	-----------	-----

Total tax parcel acreage of all know projects with FILOTs	11,885.50	N/A
---	-----------	-----

Total tax parcel acreage and toal solar panel coverage) of projects with FILOTs and known or GIS estimated solar panel covergae	8,760.65	2925.77
---	----------	---------

Using the total know acreage in all parcels with FILOTs and the total estimated solar panel acreage coverage from know solar panel layout data - Percentage of total acreage occupied by solar panels	33.40%	
---	--------	--

Total Farmland (2022 USDA Agricultural Census data)	162,716.00	
---	------------	--

Using the averaged solar panel coverage percentage per acre of involved parcel acreage and the total farmland acreage per USDA; the percentage of farmland that would be coverd in solar panels of all know projects with FILOTs would be -	2.44%	
---	-------	--

---